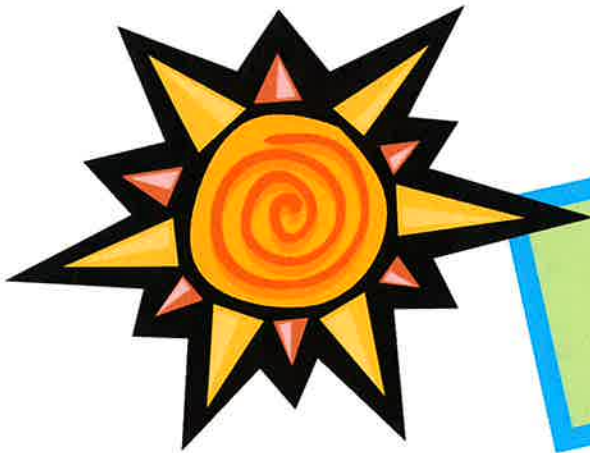




**TRUCKEE-DONNER**  
Recreation & Park District

Little Stars  
Preschool Camp  
2022



Ages 2-3+



Kristin Henry  
Preschool Youth Programs Coordinator  
(530) 550-4454  
License #293616131

## Welcome

Welcome to Camp Little Stars 2022! Thank you for choosing this program for your camper. Camp is designed to introduce young children (ages 2 and 3), to the fun and excitement of preschool in a safe, secure preschool environment. Campers in this program can be potty-trained or in diapers, but please bring plenty of extra clothes, diapers, and wipes each day. This packet contains important information that will help the summer be successful for everyone. Please read the information thoroughly and feel free to ask questions. You may call Kristin Henry at 530-550-4454 with any questions.

## General Schedule

Program hours are 9:00am - 1:15pm. Monday through Friday. Please do not arrive at camp before 9:00 a.m. This is staff prep time and there is no child supervision available. Campers should be picked up no later than the scheduled ending time of the session. A late fee will be enforced if necessary. \*Sessions include any combinations of days, such as M/W/F, M/T/TH, etc.

### Session 1

June 27<sup>th</sup> - July 23<sup>rd</sup>

Ooey Gooley Discovery

### Session 2

July 25<sup>th</sup> – August 26<sup>th</sup>

Wonderful, Wet Water

## Little Stars Camp Daily Schedule

9:00 - 10:15pm Arrival, Sign-In, Table Manipulatives, and Art

10:15 - 10:30pm Clean-up, Potty Break, and Diaper Changing as needed

10:30-10:50pm Circle Group Time

10:50-11:15pm Snack Time

11:15-12:30pm Outdoor Play/Gym Play

12:30-1:15pm Lunch, Outside Time, or Inside Art Project

1:15pm Pick-Up

## HOW TO REACH CAMP

In the event that you need to reach your camper or a teacher during the time they are at camp, please call: **530-550-4457**. In the event of no answer, please call our main office at **530-582-7720**.

## Admission Procedures & Payment

Registration opens at the TDRPD front desk on **Monday, May 9<sup>th</sup>** for currently enrolled participants and siblings. **General Registration** opens for **New Families with local residency on Monday, May 16<sup>th</sup>**, and **Non-Resident families** may register on or after **May 23<sup>rd</sup>**.

Morning Block Rates (9:00am-1:15pm)

Resident: \$40.00

Non-Resident: \$45.00

Our **California Licensing Packet** for those campers **new** to our program is due back on **June 16<sup>th</sup>**. Please be sure to give this packet directly to our **Preschool Director, Kristin Henry**.

**Payment for Summer Little Stars** is due in full for **Session 1** the week of **May 9<sup>th</sup>** in order to guarantee a spot. Those campers signing up for both sessions have the option of paying for the first session in full the week of **May 9<sup>th</sup>**. A signed credit card authorization form will allow the District Office to charge full payment for the second session on **July 22<sup>nd</sup>**. This option requires a valid credit card number that will be charged on **July 22<sup>nd</sup>**. Again, this credit card authorization option is **only** available as a payment method for those campers enrolled in **both** sessions of preschool camp.

## Scholarships

The Truckee Donner Recreation & Park District offers scholarships that are available for those who qualify. Awards for camp are **40% off** daily admission. Please contact the main office for more information and to apply.

## Late Pick-Up Fees

Our camp closes at **1:15pm SHARP**. We will charge parents a late fee if they arrive late to pick up their camper. If a camper has not been picked up by **1:45pm** and staff is unable to contact anyone off the emergency form, your camper will be placed in the custody of the **Truckee Police Department**. Habitual lateness may result in permanent dismissal from our camp.

<b>1:16-1:20</b>	<b>\$5</b>
<b>1:21-1:30</b>	<b>\$25</b>
<b>1:31-1:45</b>	<b>\$30</b>

## POLICIES & EXPECTATIONS

**Refund Policy:** We do not offer refunds for camp days not used at this time.

**Illness/Injury Policy:** If your child is not feeling well, please don't bring them to camp. We do not have the facilities or the staff members to take care of your sick child. If your camper becomes ill during the day, a staff member will call the parents immediately and ask that you pick them up within 30 minutes.

Staff is trained in CPR and First Aid and will handle emergency situations as they have been taught. With the exception of life-threatening emergencies, effort will be made to reach an emergency contact person before calling professional medical personnel. If program staff decides a child needs immediate medical attention and emergency contacts are unavailable, professional medical personnel may be called to transport the child to the hospital.

**Medication:** Parents must provide written instructions and authorization for staff when a child is to be given medication during a TDRPD program. Staff will only dispense medication in the original packaging to the dosage described on the label. If a child requires medication at any time during the day, the *Parent Consent for Administration of Medications* (LIC 9221) form must be complete at sign in.

**Sunscreen:** Please apply waterproof sunscreen to your child each day before arriving at Summer Little Stars. Staff will help the campers re-apply sunscreen if needed in the afternoon, but require the initial dose to be applied at home. If a child is extra sensitive to the sun, send him/her with a hat and shirt to wear over the swimwear. Please notify staff of any special needs or instructions.

**Sign-in and Sign-out:** A parent/guardian must sign a child in and out of camp on the master roster every day. Please note, a full signature is required, no initials. At the end of each day the parent/guardian should also notify a staff member that they are picking up a camper. Only parents and those listed on the emergency form will be allowed to pick up a child from camp. In the event that someone not listed on the emergency form needs to pick up a child, staff must receive a written note from the parent/guardian specifying who will be picking up the child. **Staff will check identification of anyone not listed on the emergency form picking up a child.**

**Behavior Policy:** Discipline is used as a "learning opportunity" rather than a "punitive experience". Campers are expected to treat each other, facilities, equipment and staff with respect and care. Program staff review rules often and encourage the children to work out problems independently. Staff will notify parents about behavioral problems and discuss the discipline techniques being used. Also, if a child is too upset to be consoled it may be necessary to notify a parent to help calm the child. Upset children can create a stressful atmosphere for others in camp. It is our responsibility to each child to provide a safe and nurturing environment.

**Snack/Lunch:** Please send a healthy snack, lunch (if child is attending all day), and plenty of fluids. Be sure that packed lunches are age-appropriate, meaning that children are able to eat on their own without major help from teachers, and, that it includes the necessary eating utensils. Staff is not able to refrigerate food so please include an ice pack to keep perishables fresh if necessary. Please label all lunchboxes, water bottles, ice packs, and food containers.

### Questions and Concerns

Please feel free to contact Kristin Henry, our Preschool Director, with any questions regarding TDRPD Preschool Camps at either 530-550-4454 or 530-550-4457.

Thank you for participating in Summer Camp 2022. We look forward to creating lasting memories for you and your child!!

### What to Bring to Little Stars Camp

- Swimsuit, to be worn under clothes
- Sunscreen, to be applied before drop-off
- Large snack & large lunch, and water bottle
- Diapers and wipes
- (2) Full changes of clothes
- Towel
- Sunglasses and/or Hat
- Tennis shoes for bike playing and gym time
- Label ALL belongings please!!
- No toys from home
- Light jacket or sweater
- Sweatpants, if needed for weather